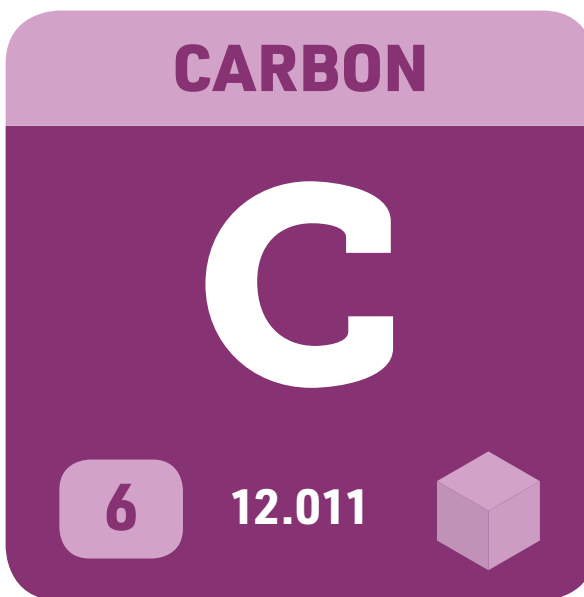
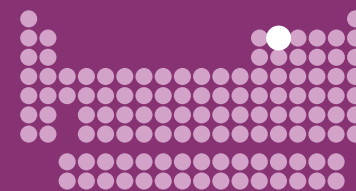
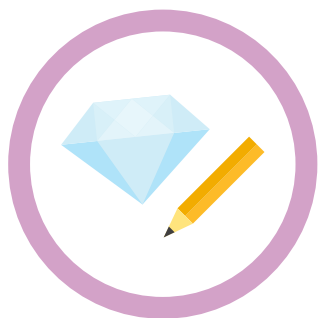


# #6



## ALLOTROPES



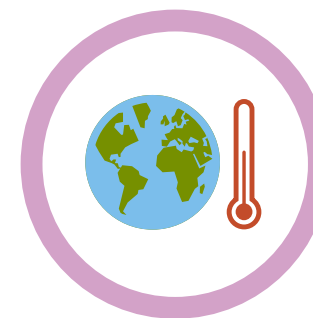
Carbon has several forms (allotropes), which include diamond, graphite, graphene, and nanotubes.

## LIFE



Carbon is essential to life, as it is able to form a huge variety of chains of different lengths.

## CLIMATE CHANGE



Burning fossil fuels releases carbon dioxide. It traps heat in the atmosphere, raising global temperatures.